

6th KnowHow Meeting (ONLINE) ... 26 Aug 2020

(1) Master Data Management ... Data Quality ... Data Governance

www.DataCampus.eu

From local to global data management – Case Fortum RWS

Riikka Blomberg
(fortum, Finland)

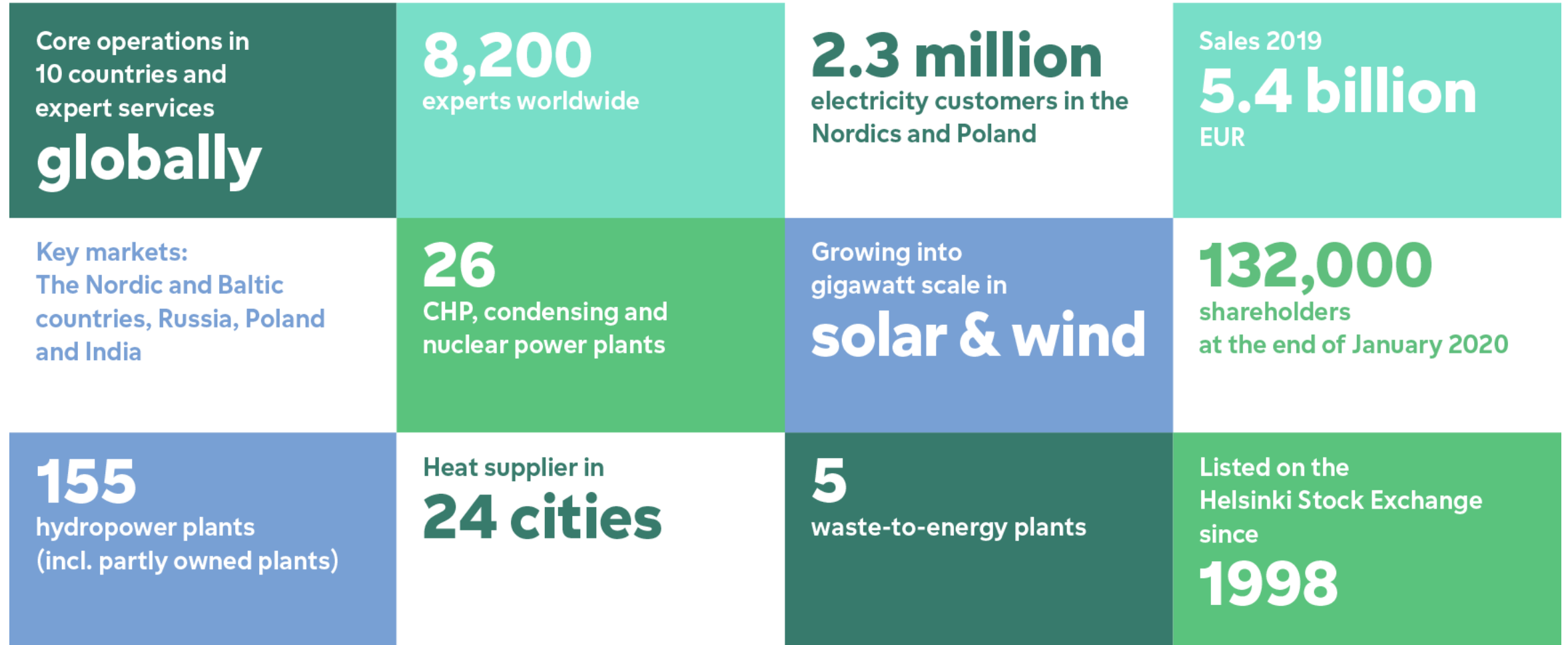


From local to global data management – Case Fortum RWS

Join the
change



Fortum in brief



Fortum Recycling and Waste – Drivers for Data Management

Why – As-Is definition in 2017

- Ekokem (nowdays Fortum Waste Solutions) has gone through 2 big acquisitions.
- Organisations and processes (partly) have been re-designed and changed, but our Service Portfolio, Master Data and IT systems have not been integrated yet or there is no systematic processes for handling those.
- Our current way of working and defining services has evolved over time in “evolutive way” without that much of control or plans.
- We also have 3 separate IT environments for running our current operations and none of them is suitable as our future solution. Because we don't have group Master Data defined the visibility into business is poor.

What – To Be definition in 2017

- Define new service portfolio and implement service life-cycle management processes
- Implement new IT platform to support new operating model (old systems should be replaced)
- Identify core business information and Implement Master Data Governance model to ensure data quality and (re)usability
- Understand customer and service profitability

2017 – Local data management

FINLAND



Commercial agreement with customer



Technical contract(s) to FI ERP

- New materials created
- New services created



FI reports

SWEDEN



Commercial agreement with customer



Technical contract(s) to SE ERP

- New materials created
- New services created



SE reports

DENMARK



Commercial agreement with customer



Technical contract(s) to DK ERP

- New materials created
- New services created



DK reports

RWS Management and controlling



How to develop material receiving as there is only country specific data? How to have consolidated view?

2020 – Global data management

FINLAND



Commercial agreement with customer



- New material and / or service request(s) to Semarchy

SWEDEN



Commercial agreement with customer



- New material and / or service request(s) to Semarchy

DENMARK



Commercial agreement with customer



- New material and / or service request(s) to Semarchy



Global approval in Semarchy

FINLAND

Technical contract(s) to FI ERP

SWEDEN

Technical contract(s) to SE ERP

DENMARK

Technical contract(s) to DK ERP

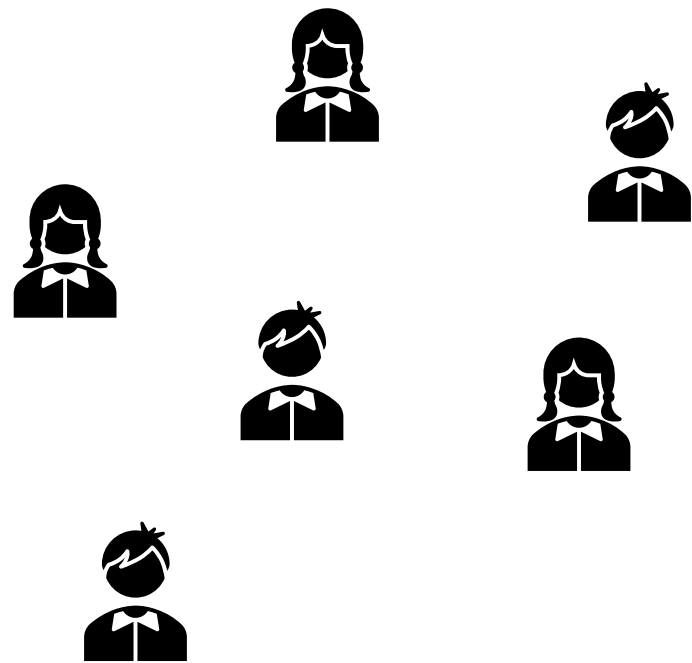
RWS Management and controlling



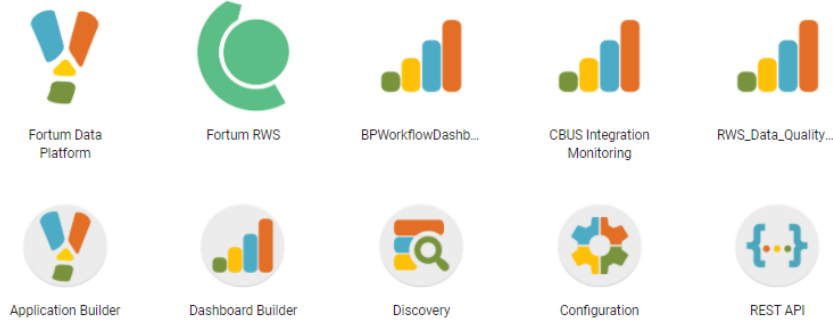
Common materials and services enable gathering numbers in one report

Success factors

PEOPLE



SOFTWARE



MDM and People

- All business people are able to use Semarchy for requesting new data or changes to data
 - Tool is easy to use and makes data visible for business users in understandable way
 - Users can understand the data flows from master data system to ERP as the roles of the systems are communicated very clearly
- Data stewards approving / declining data requests locally and data owners globally
 - Data stewards are also supporting business people locally in data related matters
- Especially in business critical master data domain, material, development in data understanding has been huge
 - Material working group is consisting people from all different countries
 - Changes to material are agreed in the group and approved by data owner
 - Previously decisions about materials were done locally

MDM and Software

- MDM software Semarchy is the key enabler that the data management has been moved from local level to global level
- All countries are having same definitions for master data entities but the data itself can be local. All data for one data domain is though always managed through Semarchy.
- Currently Semarchy in use fully in Sweden and partly in Finland
 - Larger Finland go-live in November
 - Go-live in Denmark in Q1 2021
- Semarchy development done by Solita through IT platform development project, also production environment development.

Questions?

- Riikka Blomberg



Summary:

- 15+ years of data management
- Running MDM implementation for Fortum RWS
- Lives on a farm with family and a pack of animals
- riikka.blomberg@fortum.com

